

General Stainless Steel Sluice Sink Installation Guidelines

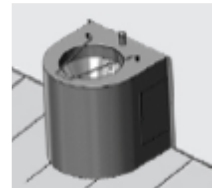
General Sluice Sink Installation Instructions

Stainless steel sluice sinks should be installed on a solid flat wall at an appropriate height to suit the age range of the users. As a general guide 850mm from floor to the top front edge of the sluice sink appears to be a popular choice.

Sluice sinks are made up of a conical bowl with a 4" (100mm) outlet and a full flushing rim very similar to a traditional toilet. The waste is flushed down the outlet by water from the flushing rim. The 4" outlet will need to be connected to a 4" soil pipe and the flushing rim will require connecting to a manual flushing cistern.

There are 4 basic types and styles of sluice sink:

Model MHP825 - is a floor standing sluice sink 410 x 550mm supplied as standard with a hinged bucket grating, removable access panel and wall fixing flanges.



Model MHP824/804 - is a wall mounted sluice sink 600mm x 600mm, supplied as standard with an anti drip edge to all four sides, and wall fixing brackets, with optional front support legs. Manufactured to comply with the requirements of HTM64: Sanitary Assemblies (2006).



Model MHP822/802 - is a wall mounted sluice sink 1000 x 600mm with the sluice sink at one end and a plain top at the other end, supplied as standard with an anti drip edge to all four sides, and wall fixing brackets, with optional front support legs. Manufactured to comply with the requirements of HTM64: Sanitary Assemblies (2006).



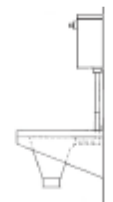
Model MHP821/801 - is a wall mounted sluice sink 1600 x 600mm, with the sluice sink at one end, a sink bowl in the middle and a plain top at the other end, supplied as standard with an anti drip edge to all four sides, and wall fixing brackets, with optional front support legs. Manufactured to comply with the requirements of HTM64: Sanitary Assemblies (2006).



Flush Pipe Connections

There are two choices of connections available on the sluice sink:

Top entry flush pipe connection for use with an **exposed** cistern mounted on the face wall directly above the sluice sink.



Back entry flush pipe connection for use with a **concealed** cistern mounted in a duct directly behind the sluice sink.



Choice Of Cisterns

There are 3 types of flushing cisterns:

Stainless steel exposed surface mounted cistern, chrome plated front operating lever, syphon, ball valve and float, and side entry inlet connection.
Cistern size is 506mm wide x 309mm high x 191mm deep.



White plastic exposed surface mounted cistern, complete with stainless steel flush pipe, chrome plated front operating lever, syphon, ball valve and float, and side entry inlet connection.
Cistern size is 505mm wide x 316mm high x 146mm deep.



Please note stainless steel flush pipe is supplied with the top entry sluice unit, not the exposed cistern.

Black plastic concealed cistern, complete with plastic flush pipe, chrome plated through wall front operating lever, syphon, ball valve and float, and side entry inlet connection.
Cistern size is 505mm wide x 285mm high x 146mm deep.



Unpack your sluice sink and check the items for any damage, missing or incorrectly supplied or ordered items before you start the installation.

Fixing Brackets to Sluice Sink

Remove the protective film from the two wall brackets and secure the brackets to the underside of the sluice sink through the holes in the underneath of the sides with the screws provided



Fixing Sluice Sink To Wall

All sluice sinks should be installed level from side to side and front to back. There are two fixing holes in the rear of each wall bracket, these should be used to screw / bolt the sluice sink to the wall at the appropriate height. The correct wall fixings will need to be used for the type of wall on site (wall fixings are not supplied with the unit for this reason).

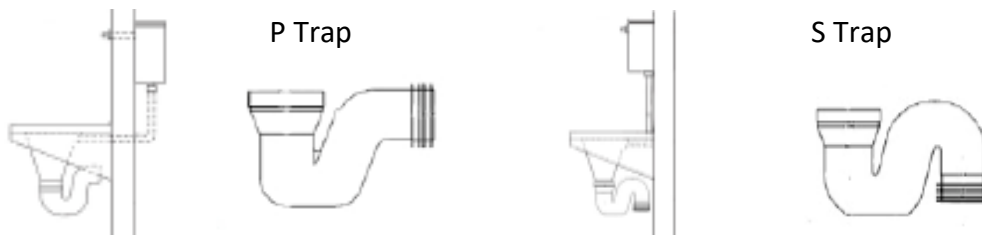
Floor standing (MHP825) sluice sinks sit on the floor and attach to the wall by screwing / bolting through the outward flanges on both sides.

Front Support Legs

If front support legs have been purchased there is an M8 stud at the front of the wall brackets to attach the front legs, the legs screw on to the studs and the adjustable foot can be screwed into the floor when the correct height has been set. The legs will need to be fitted to the studs before the wall brackets are fully tightened to the wall.

Water Trap

There are two types of 110mm diameter water traps. P Trap with a horizontal outlet and S Trap with a vertical outlet.



Both styles of trap (if purchased) push onto the 100 mm outlet spigot on the sluice sink and the other end will push into your 100-110mm building waste pipework.

Downpipe Connection

Top entry for exposed cistern—our top entry sluice sinks are supplied with a 38mm stainless steel flushpipe and O ring to seal the flushpipe into the spigot at the top of the sluice bowl. The O ring which is delivered attached to the side of the downpipe should be carefully placed inside the recess in the top entry spigot on the sluice sink. The stainless steel downpipe has a smaller diameter at the bottom to fit into the spigot. The bottom of the downpipe and the O ring in the spigot should be lubricated with washing up liquid or similar and the downpipe carefully inserted keeping it horizontal at all times. The downpipe should slide in until fully inserted.



Back Entry for concealed cistern -There is a 55mm diameter back entry inlet connection to the rear underneath of the sluice sink. The plastic 38mm downpipe supplied with the concealed cistern (if purchased) fits into the connection with the use of a plastic / rubber wc inlet connector that is supplied fitted to the inlet of all of our sluice sinks.



Taps and Waste Fitting For MHP821 Units

For MHP821 units a 38mm flush grated waste fitting is supplied. This will need to be assembled to the waste hole in the sink unit and connected to a suitable 38mm water trap and then to the buildings waste pipework.

If any taps have been purchased these will need to be fitted following the installation instructions included with the taps.

Cisterns

Instructions for the flushing cisterns are included with all / most of our cisterns and the generic plastic concealed and exposed cistern instructions are at the end of these instructions.

When the cistern is installed and connected the unit and cistern should be checked for correct function and any leaks.

Disclaimer

Acorn Thorn Ltd continue to pursue a policy of constant product improvement and development. We reserve the right to alter and improve all products without prior notice. Products may therefore differ slightly in specification or visual effect from those illustrated. The information provided is for general guidance only and does not constitute professional advice and is subject to change. We recommend that all installations are undertaken by a professional qualified plumber / electrician, and it is the installers responsibility to ensure the installation meets the relevant guidelines and regulations.